

# **BONALDO**

## Gocce

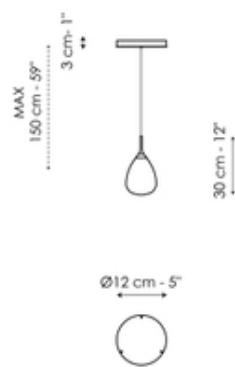
Designer: Bartoli Design



This image has been transferred to the luminaires of the Gocce lamp, which drop down from above to light up the space. The Gocce collection is based around the central element of two tear-shaped Pyrex glass bubbles, a transparent one on the outside and the other, featuring a satin finish, on the inside. The glass bubbles are connected to a metal rod, which supports them and contains a light source. The crystal droplets chandelier is available in a single version, or as part of a composition featuring three or five lamps, complete with ceiling rose.

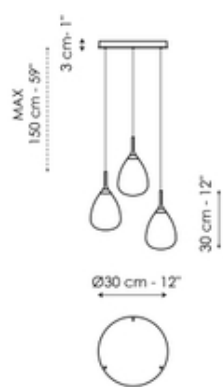


# Data sheet



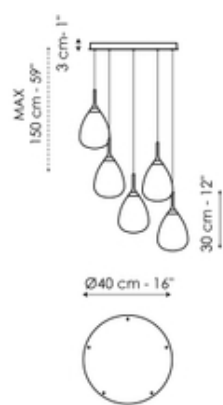
## 1 light suspension

Width: 12cm  
Depth: 12cm  
Height: 30cm



## 3 lights suspension

Width: 30cm  
Depth: 30cm  
Height: 30cm

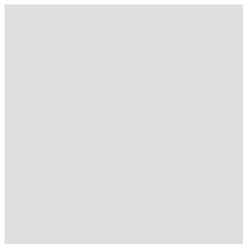


## 5 lights suspension

Width: 40cm  
Depth: 40cm  
Height: 30cm

# Finishes

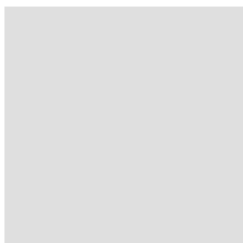
## Lampshade - external glass



**Glass**  
Transparent

---

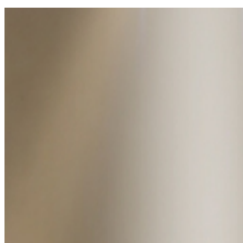
## Lampshade - internal glass



**Glass**  
Satin finish

---

## Frame



**Metal finish**  
Champagne

---

Materials, fabrics, leathers, colors and finishes are approximate and may slightly differ from actual ones. You can find the complete collection of Bonaldo fabrics and leathers on the website <https://bonaldo.biz>