

# ***BONALDO***

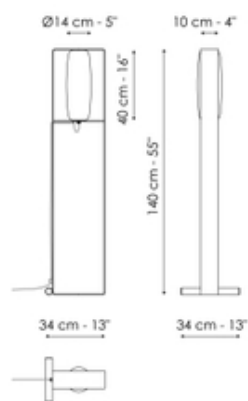
## Bio-s



A metallic architectural structure, painted in elegant bronze or lead shades, encloses the blown glass of the lampshade in all its finesse: contrasting elements that encounter one another in the Bio-s collection of lamps, designed by Studio Team Design, in an expression of three-dimensionality and perspective. The design of these lights does not go unnoticed, strengthened by its suggestive capacity accentuated by the lampshade, in transparent glass, but especially in the smoked mirrored version, able to reflect the environment in which the lamp is placed.

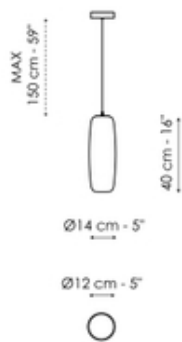


# Data sheet



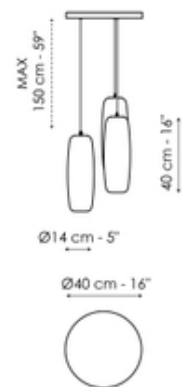
## Floor lamp

Width: 34cm  
Depth: 25cm  
Height: 140cm



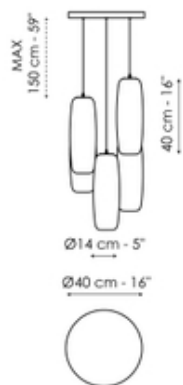
## 1 light suspension

Width: 14cm  
Depth: 14cm  
Height: 40cm



## 3 lights suspension

Width: 40cm  
Depth: 40cm  
Height: 40cm

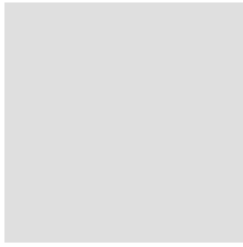


## 5 lights suspension

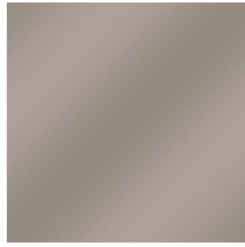
Width: 40cm  
Depth: 40cm  
Height: 40cm

# Finishes

## Lampshade



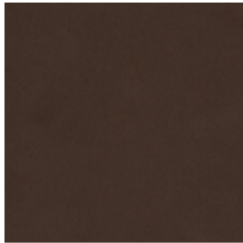
**Glass**  
Transparent



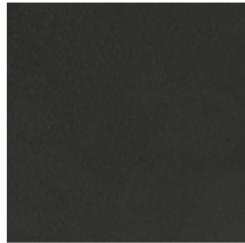
**Glass**  
Smoked mirrored

---

## Frame - Floor lamp



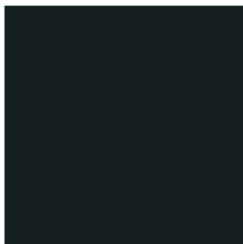
**Painted metal**  
Mat bronze



**Painted metal**  
Mat lead

---

## Frame - Suspensions



**Painted metal**  
Mat black

---

Materials, fabrics, leathers, colors and finishes are approximate and may slightly differ from actual ones. You can find the complete collection of Bonaldo fabrics and leathers on the website <https://bonaldo.biz>